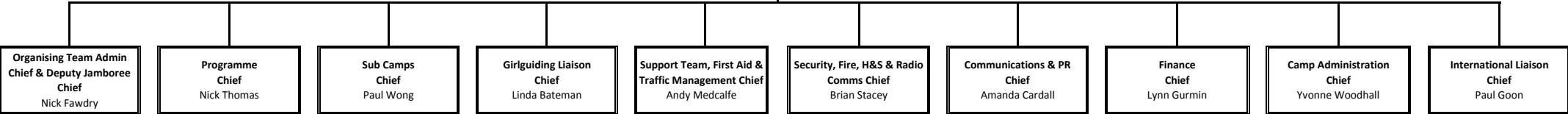


Jamboree Chief
Simon Cardall

County Commissioner
Andrew Lloyd
(Oversight)

Deputy County Commissioner
Paul Little
(Oversight)



Organising Team Admin Deputy to Jamboree Chief Meeting Planning Agendas & Minutes Documentation Terms and Conditions Timings Site Plan Staff Allocations to teams Procurement	Day Time Activities Evening Entertainment Evening Staff Activities Evening Staff Entertainment Licenses Activity Coach booking & Contract Procurement	Sub Camps Staff Sub Camp Staff Catering Sub Camp Programme Day Camping Allocation Groups Departure Plan & internal transport bookings Creche Procurement Pastoral Care including Sub Camps and Staff	Represent Girlguiding Advise on rules and policies for Girlguiding within organising team	Site Services Traffic Management Arrivals and Departures First Aid Internal Transport External Transport - shops Onsite Coach Management and bus/coach lanes Walking Buses Internal Gates, Car Parks & Marshalling Kit Moves Build & Take Down Marquees/Generators & Lighting Towers Generator Fuelling Procurement	Security Radio Comms Fire Safety Heath & Safety Risk Assessments Noise External Gates Procurement	Internal Communications External Communications P.R Website Newspaper Photography/Video Information Local Liaison Staff Clothing & Neckers & Badges B.A Merchandise Liaison Procurement	Retail Banking Finance Officers Procurement	Booking Management Registrations Booking In Staff/Participant Data Lanyards Disclosure/CE/DBS/PVG - checks Procurement	International Support International Marketing Pastoral Care including International & Faith Ceremonies Links with International Scouts and Guides Guest Hospitality
--	---	--	--	--	--	---	--	--	--

Total support needed (staff) 0	Total support needed (staff) 80	Total support needed (staff) 30	Total support needed (staff) 0	Total support needed (staff) 20	Total support needed (staff) 30	Total support needed (staff) 10	Total support needed (staff) 0	Total support needed (staff) 2	Total support needed (staff) 2
---	--	--	---	--	--	--	---	---	---